

**CROWD**

# **Clean Rivers of West Dorset Meeting**

Wootton Fitzpaine Village Hall, Wootton Fitzpaine DT6 6ND

Julian Okoye MBA CEng MIET

5 December 2025

**Wessex Water**

YTL GROUP



# Questions

Ofwat – S19 Undertaking

River Bride

Charmouth

Seatown/Chideock

Phosphate/Orthophosphate

# OFWAT

**Wessex Water**

YTL GROUP



In response to WW's Section 19 undertakings, how does WW's undertaking to cut spills at specific overflows through new investment in AMP8 affect CROWD rivers?

What might WW's undertaking to help customers to sustainably manage rainwater look like in practice?

## What is it all about?

Conclusion of Ofwat's long running investigation into Wessex Water's wastewater treatment and network performance.



*“To their credit, the company has been one of the more proactive in investigating and rectifying the problems identified. However, there remain breaches which must be accounted for and corrected.”* **OFWAT**

## £11m redress package

- Offered by Wessex Water
- To be paid by Wessex Water and shareholder and not customers.
- Better outcome for customers and the environment
- Greater than financial penalty that might otherwise have been imposed.

# £11m redress package

**1.1 million**

## **Rainwater Management Fund**

- Support customers manage rainwater sustainably at their properties.

### **What does it look like?**

- Targeted grants and expert support to prevent rainwater entering combined sewers and reducing potable water use.
- Work in progress (Potentially - Homes, Groups, Targeted Invitations)

**£1.3 million**

## **Investment in installing flow monitors**

- 133 sites
- Saving costs for customers

**£8.6 million**

## **Tackling storm overflows**

- Sealing privately owned drains and sewers to tackle infiltration.
- Investing to reduce spills at specific storm overflows.

### **Where will this be done**

- Investigation and appraisal in progress
- Likely to be prioritised sites
- Potentially NBS

# River Bride

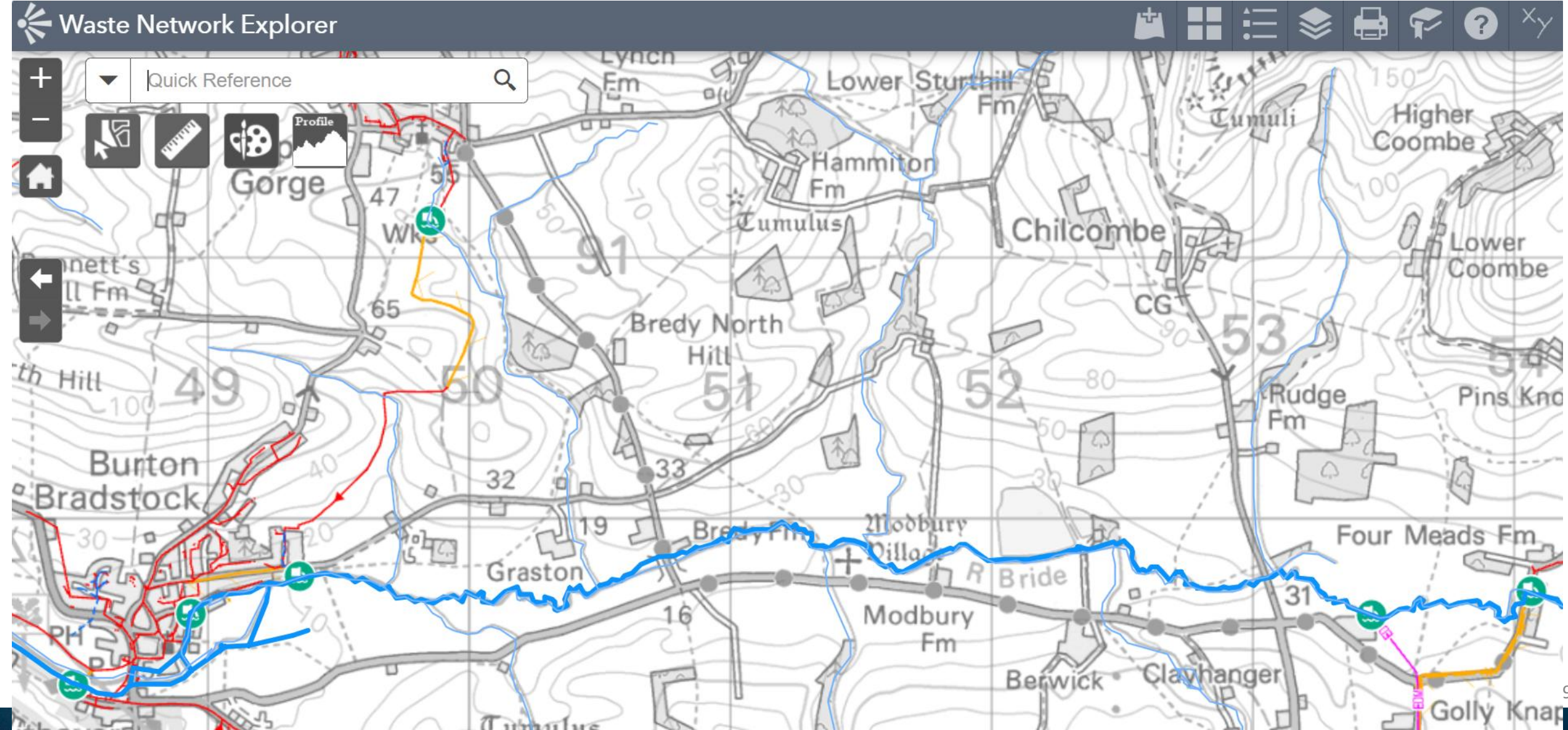
**Wessex Water**  
YTL GROUP



The Bride has not previously been represented at CROWD.

Can you quantify sewage spills into the River Bride from WW assets in recent years, explain what is causing the spills and tell us what actions are planned or currently being taken to reduce or stop them?

# River Bride – 6 overflows



# River Bride – Overflow Discharges



[Storm Overflow Event Duration Monitoring EDM Annual Data 2024](#)  
storm-overflow-event-duration-monitoring-edm-annual-data-2024.xlsx - (28.06mb)

Site Name	Type of overflow	Overall Level of Treatment	What's getting in the sewer causing it to discharge?	Receiving Water / Environment	2020 spill count	2021 spill count	2022 spill count	2023 spill count	2024 spill count	Improvement Date
Puncknowle next to Gully Knap Farm Storm Tank	Storm overflow at water recycling centre after settlement treatment	Diluted and partially treated	Groundwater	RIVER BRIDE	13	34	42	74	100	2030
Burton Bradstock Burton Southover *	Storm overflow at pumping station with settlement treatment	Diluted and partially treated	Rainwater	RIVER BRIDE (S)	2	2	0	3	3	Meets target
Litton Cheney Chicksbridge	Storm overflow at pumping station with settlement treatment	Diluted and partially treated	Groundwater	RIVER BRIDE(S)	170	113	89	184	188	2030
Burton Bradstock Annings Lane	Overflow at pumping station	Diluted and partially treated	Rainwater	River Bride	-	0	2	13	16	Significant improvements planned
Burton Bradstock Grove Road	Storm overflow on sewer network	Diluted	Rainwater	RIVER BRIDE(S)	4	6	4	10	12	2040

Shipton Gorge Off Markets Lane	Storm overflow at pumping station with settlement treatment	Diluted and partially treated	Rainwater	TRIBUTARY OF THE RIVER BRIDE	-	-	-	10	15	2045
--------------------------------	---	-------------------------------	-----------	------------------------------	---	---	---	----	----	------

---

Near Real Time Information

---

Contributing Area

---

Site Summary

---

Visual Representation

---

Rainfall

---

Impact

---

# Burton Bradstock Burton Southover



## Storm Overflow Location Details



### BURTON BRADSTOCK BURTON SOUTHOVER



No recent discharges

[< Return to Regional Overview](#)

Discharges	Site Summary	Rainfall
Impact	Investment Plans	Any Questions?

**Permit Reference** ([see Public Registers Online](#))

401968

**Discharge History** (number of discharges per year, which approximately equates to how many days saw discharging activity, regardless of duration)

Discharges in 2023: 3

Discharges in 2024: 3

Discharges in 2025 (to end of October): 0

**What's getting in the sewer causing it to discharge?**

# Burton Bradstock Grove Road

## Storm Overflow Location Details



**BURTON BRADSTOCK GROVE ROAD**

No recent discharges  
[< Return to Regional Overview](#)

Discharges	Site Summary	Rainfall
Impact	Investment Plans	Any Questions?

**Permit Reference** (see [Public Registers Online](#))

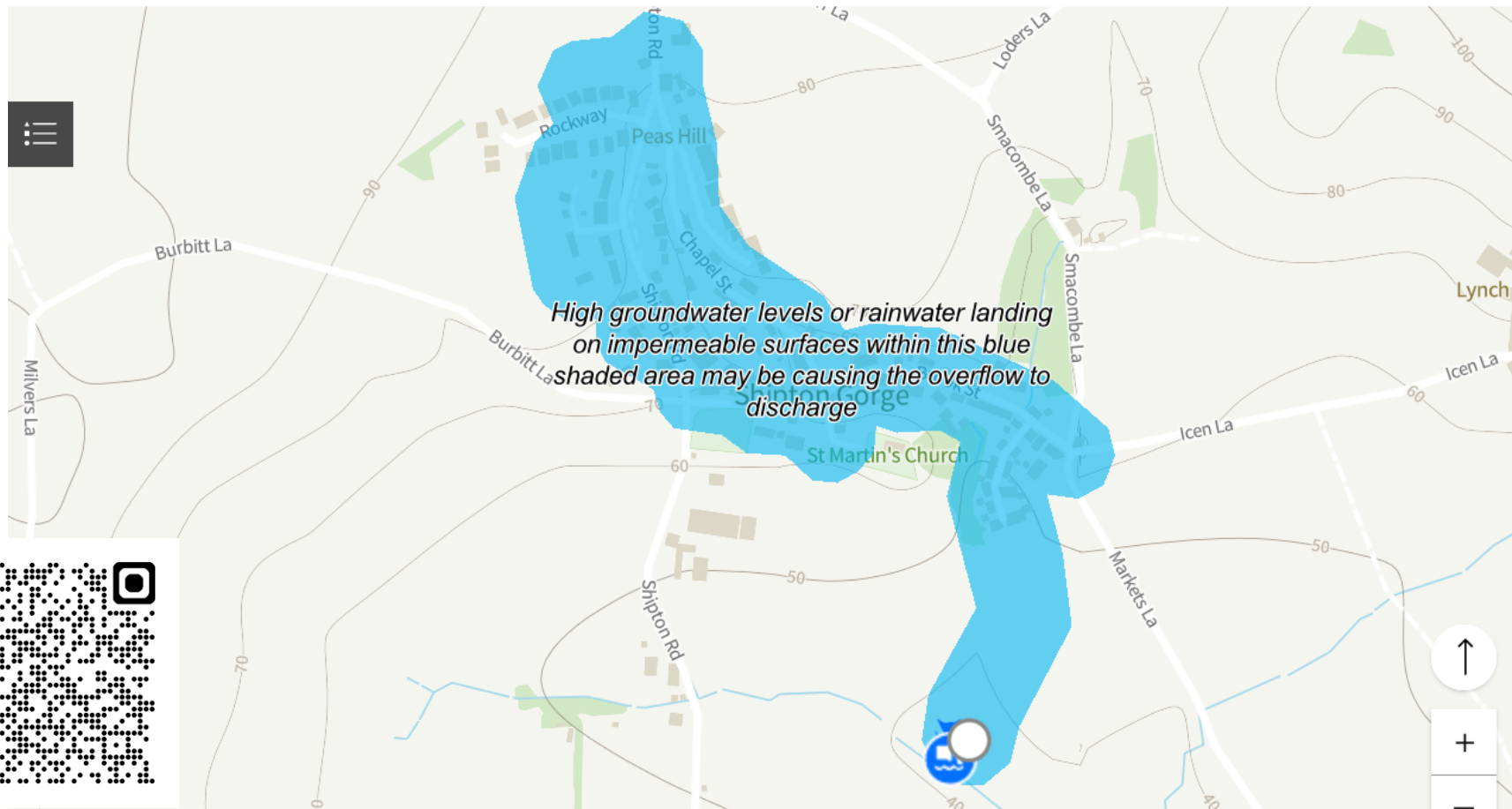
401868

**Discharge History** (number of discharges per year, which approximately equates to how many days saw discharging activity, regardless of duration)

Discharges in 2023: 10  
Discharges in 2024: 12  
Discharges in 2025 (to end of October): 3

# Shipton Gorge Off Markets Lane

## Storm Overflow Location Details



**SHIPTON GORGE OFF MARI**

No recent discharge  
[Return to Regional Overview](#)

Discharges	Site Summary	
Impact	Investment Plans	A

**Permit Reference** (see [Public Registers Online](#))  
NPSWQD008206

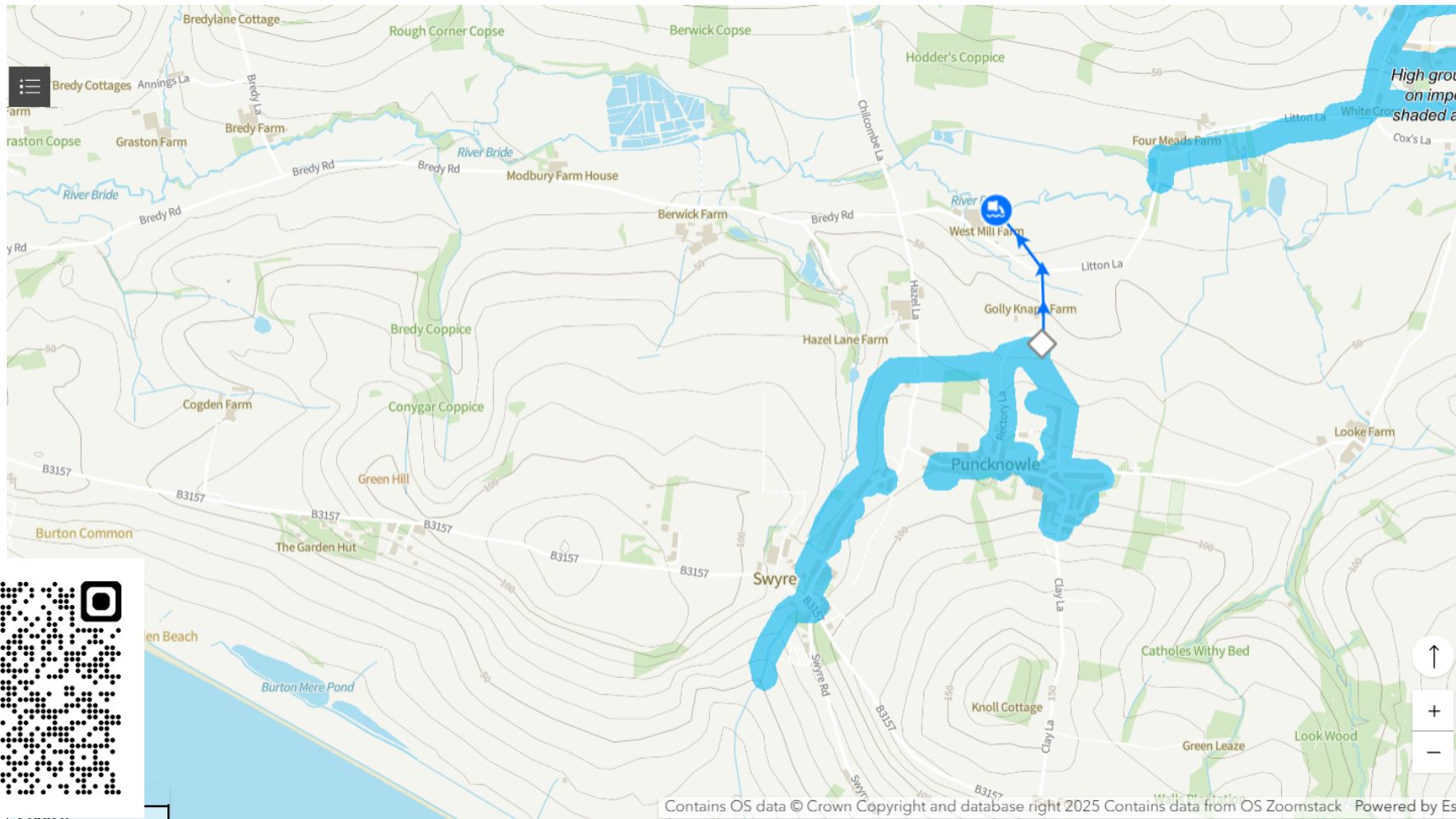
**Discharge History** (number of discharges which approximately equates to how many discharging activity, regardless of duration)

Discharges in 2023: 10  
Discharges in 2024: 15  
Discharges in 2025 (to end of October): 3

**What's getting in the sewer causing it to**

# Puncknowle - Gully Knap Farm Storm Tank

## Storm Overflow Location Details



<b>PUNCKNOWLE NEXT TO GULLY KNAP FARM STORM TANK</b>		
Discharged recently <a href="#">Return to Regional Overview</a>		
Discharges	Site Summary	Rainfall
Impact	Investment Plans	Any Questions?

Storm overflow at water recycling centre after settlement treatment

### Level of Treatment Provided

Diluted and partially treated (e.g. sewage diluted by rainwater or groundwater, and settled in storage tanks prior to discharge)

### Permit Reference (see [Public Registers Online](#))

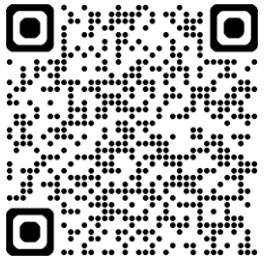
042618

**Discharge History** (number of discharges per year, which approximately equates to how many days saw discharging activity, regardless of duration)

Discharges in 2023: 92  
Discharges in 2024: 100  
Discharges in 2025 (to end of October): 19

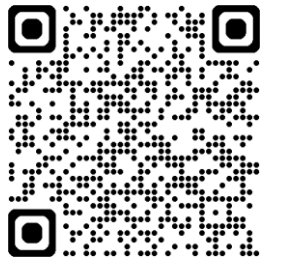
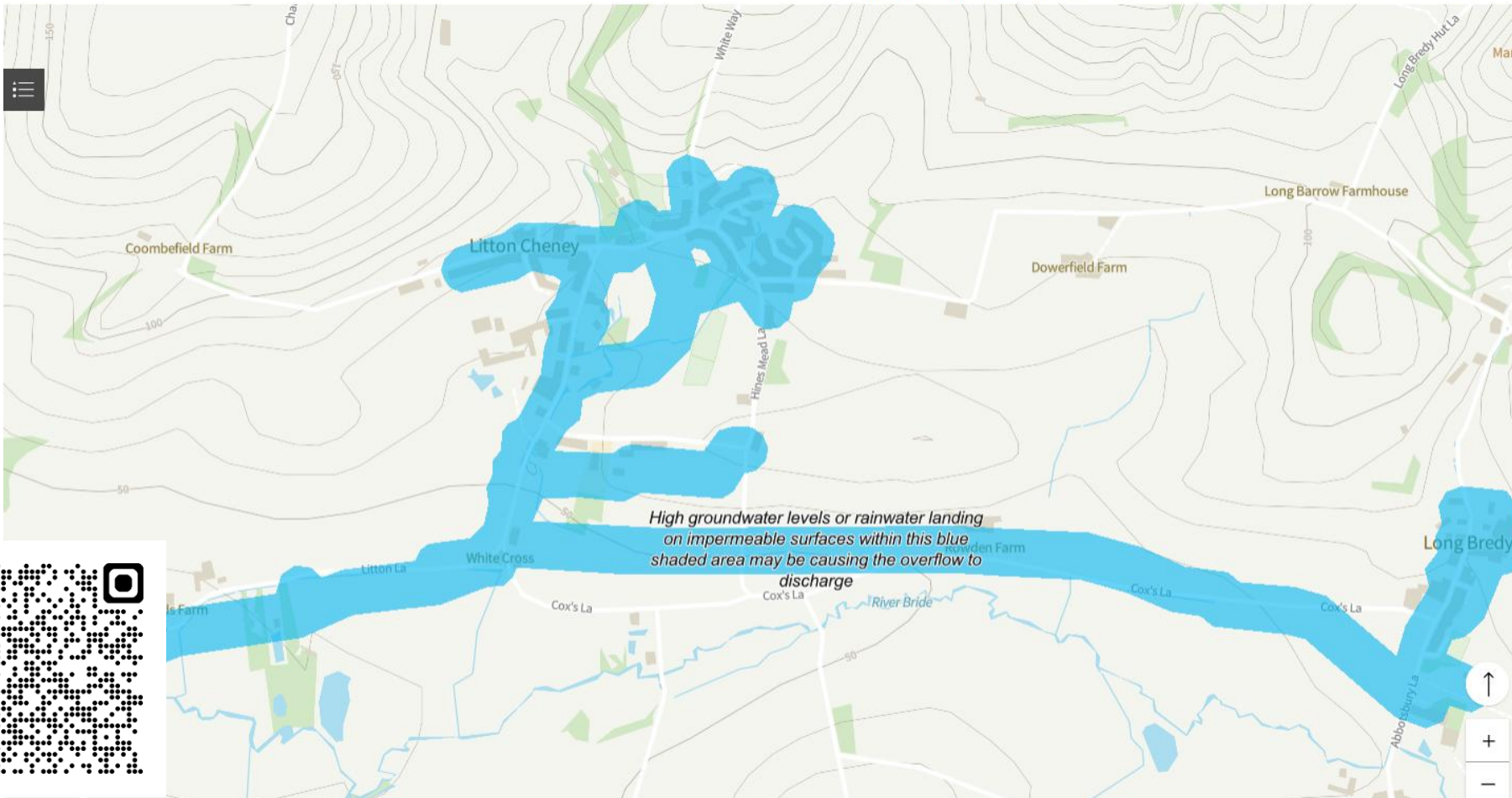
### What's getting in the sewer causing it to discharge?

When the surrounding water table is high, this overflow is known to be affected by groundwater



# Litton Cheney Chicksbridge

## Storm Overflow Location Details



LITTON CHENEY CHICKSBRIDGE		
Currently discharging <a href="#">Return to Regional Overview</a>		
Discharges	Site Summary	Rainf
Impact	Investment Plans	Any Ques
<b>Type of Overflow</b>		
Storm overflow at pumping station with settlement treatment		
<b>Level of Treatment Provided</b>		
Diluted and partially treated (e.g. sewage diluted with rainwater or groundwater, and settled in storage tanks prior to discharge)		
<b>Permit Reference</b> (see <a href="#">Public Registers Online</a> )		
401592		
<b>Discharge History</b> (number of discharges per year which approximately equates to how many days since discharging activity, regardless of duration)		
Discharges in 2023: 184		
Discharges in 2024: 188		
Discharges in 2025 (to end of October): 61		
<b>What's getting in the sewer causing it to discharge</b>		

# West Dorset Storm Storm Overflow Improvements

## Storm Overflow Improvement Map

Select Local Authority  
All

Select Parliamentary Constitu...  
West Dorset

2025 – 2030  
Improvements

Overflows where Government targets already met

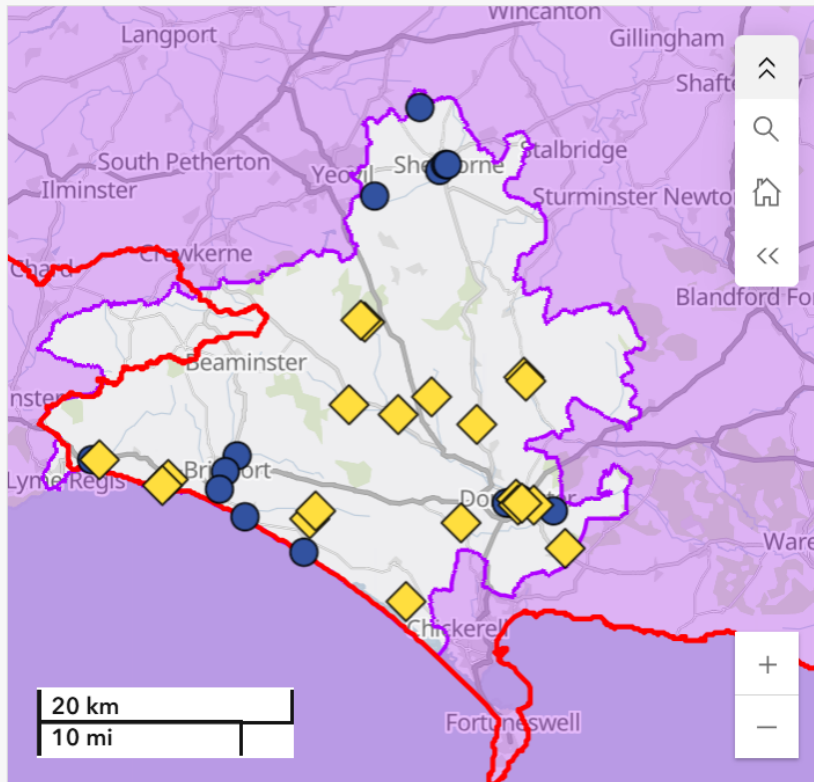
16

Future Planned Improvements

62

- ▼ NORTHBOURNE STORM TANK
- ◆ LANGFORD BLACKMOOR ROAD
- ◆ LANGTON HERRING OFF LOWER FARM INLET
- ◆ LITTON CHENEY CHICKSBRIDGE
- ◆ LONG SUTTON BENNETTS ORCHARD
- ◆ LYTCHETT MATRAVERS BULBURY LANE
- ◆ LYTCHETT MINSTER LYTCHETT BAY STORM TANK
- ◆ MAIDEN BRADLEY INLET
- ◆ MAIDEN NEWTON DORCHESTER ROAD STORM

Click on improvement to highlight on map

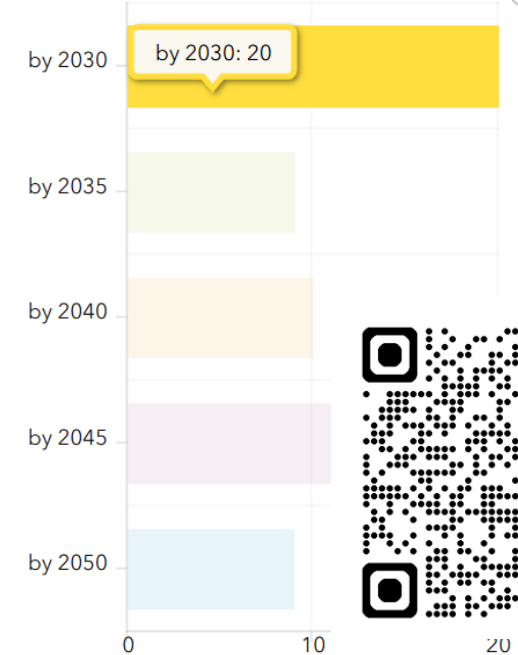


Contains OS data © Crown Copyright and database rig... Powered by Esri

Date overflow will meet Government targets

- ◆ by 2025
- ◆ by 2030
- ◆ by 2035
- ◆ by 2040
- ◆ by 2045
- ◆ by 2050

Overflows where Government targets already met



Click on bar to filter the map for that time period



# Charmouth

**Wessex Water**  
YTL GROUP



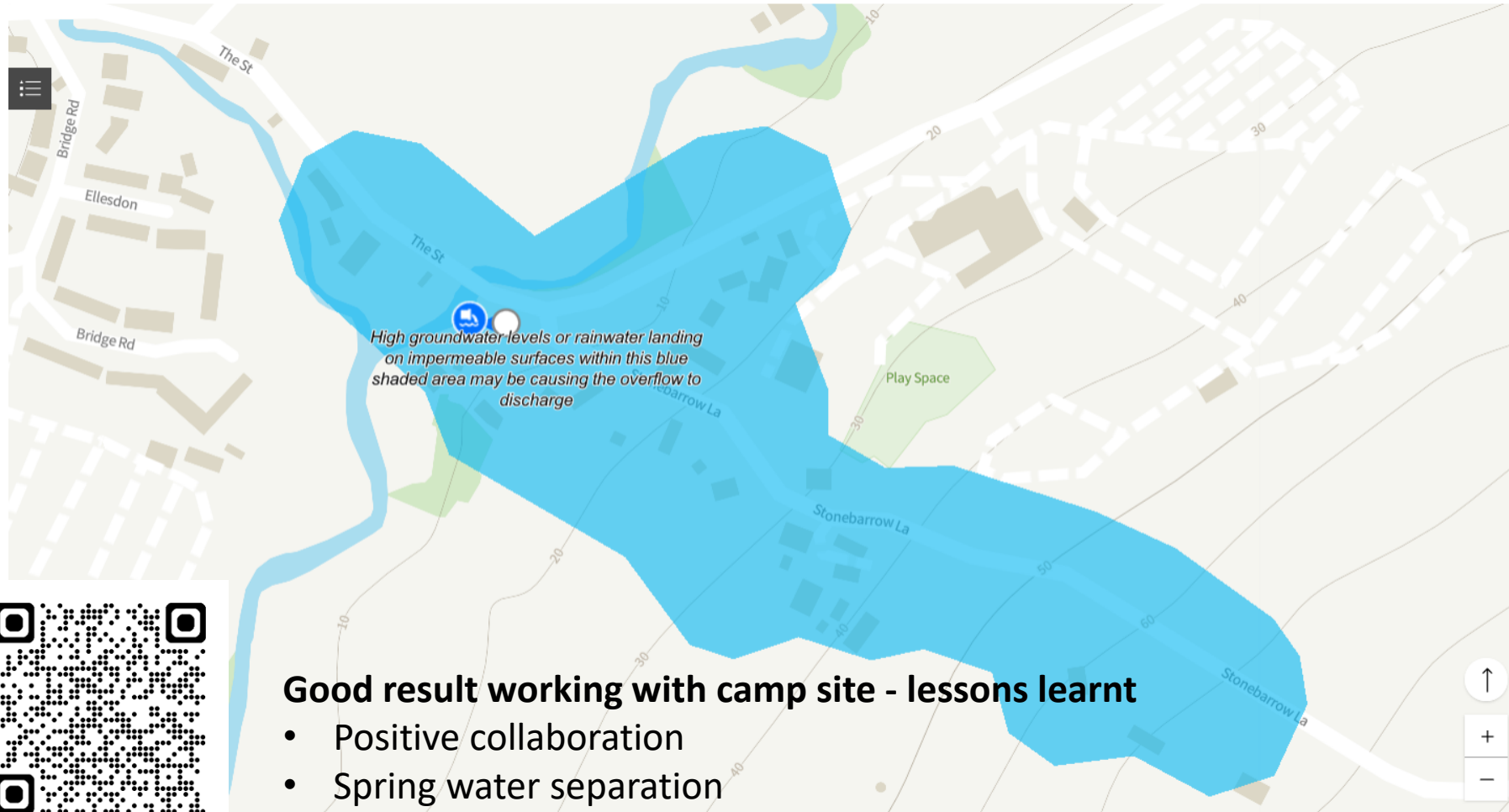
At our last meeting in September it looked as if works at Newlands Bridge, Charmouth earlier in 2025 had more or less eliminated spills. What spills have there been at Newlands EO since then?

If the approach taken at Newlands has worked, does WW have plans to work with other campsites / holiday parks to separate surface water at source and reduce pressure on the sewage treatment system?

At a Charmouth CTAP (Coastal Transition) meeting this week we heard that there had been no positive feedback from Wessex Water about a nature-based solution at Charmouth Foreshore, despite clear signs that the pumping station at the Foreshore already cannot cope with storm water levels and despite the problem being exacerbated by rising sea levels. Would WW be willing in principle to discuss using a reedbed or other NFM approach to help protect Wessex Water assets (including the STW) and help with storm surges up river?

# Charmouth Newlands Bridge

## Storm Overflow Location Details



NEWLANDS BRIDGE PUMPING STATION		
No recent discharges <a href="#">&lt; Return to Regional Overview</a>		
Discharges	Site Summary	Rainfa
Impact	Investment Plans	Any Questi

The monitor at this location has not recorded any discharges within the last 24 hours. Last recorded discharge: 26/02/2025

↕ Discha.

**Discharge History** (number of discharges per year, which approximately equates to how many days saw discharging activity, regardless of duration)

Discharges in 2023: 19

Discharges in 2024: 20

Discharges in 2025 (to end of October): 5

## Good result working with camp site - lessons learnt

- Positive collaboration
- Spring water separation
- Each situation is different

# Chideok

**Wessex Water**  
YTL GROUP



# Update on Chideock Sewage Treatment Works on the River Winniford

# Chideok WRC (Treatment)

- How it works
  - FFT 10 l/s
  - Permit SS 30mg/l BOD 40mg/l (upper 200mg/l) UV 42mJ/cm<sup>2</sup>
  - Storm tanks 253m<sup>3</sup>
  - Population equivalent - 1100

Storm overflow improvement planned

- Chideock Seatown s/o and
- Chideock Mill Lane WRC

# Chideok WRC (Treatment) Traditional Filter Works

Screen

Primary Tanks

Bio Filter

SAFS (Summer  
months)

Humus tanks

Tertiary  
treatment  
lagoons

UV

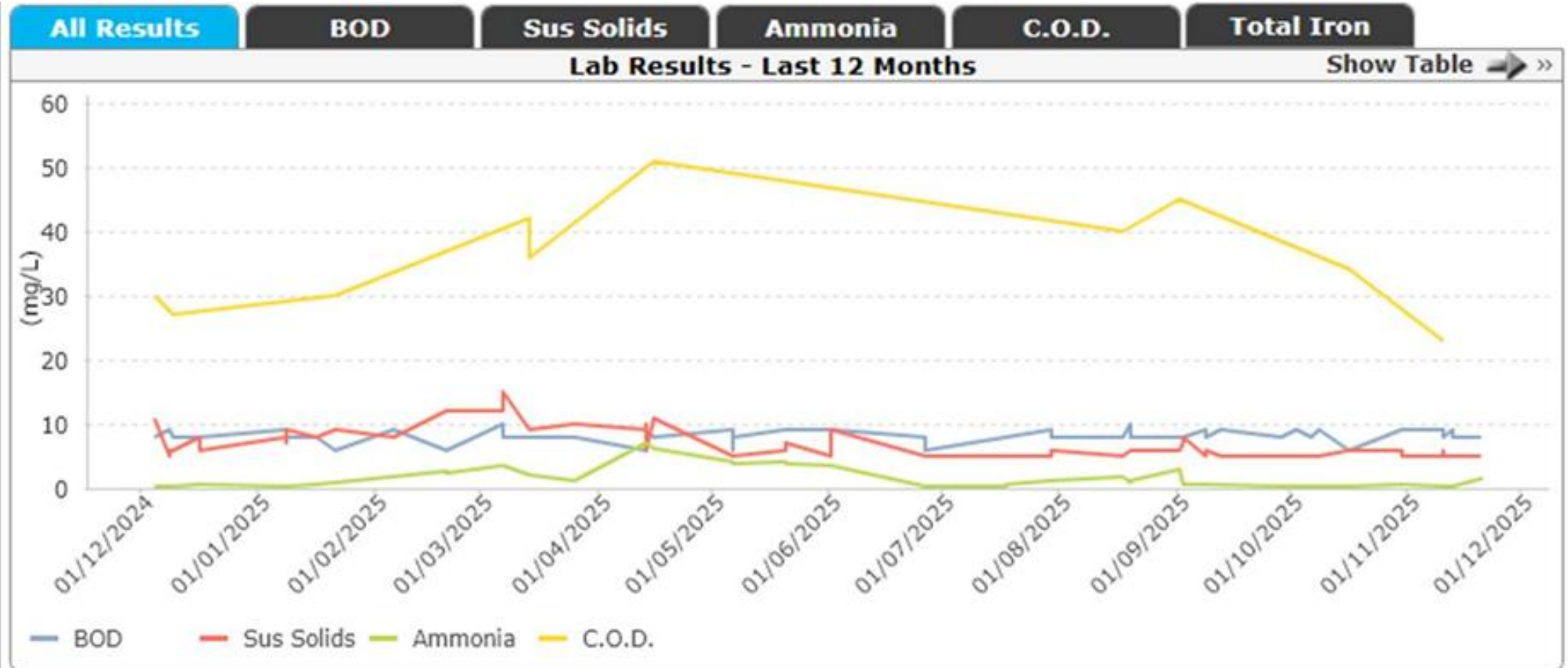
# Chideok Permit Compliance



**Sus. Solids**  
(mg/L)  
Action: 22.5  
Permit: 30

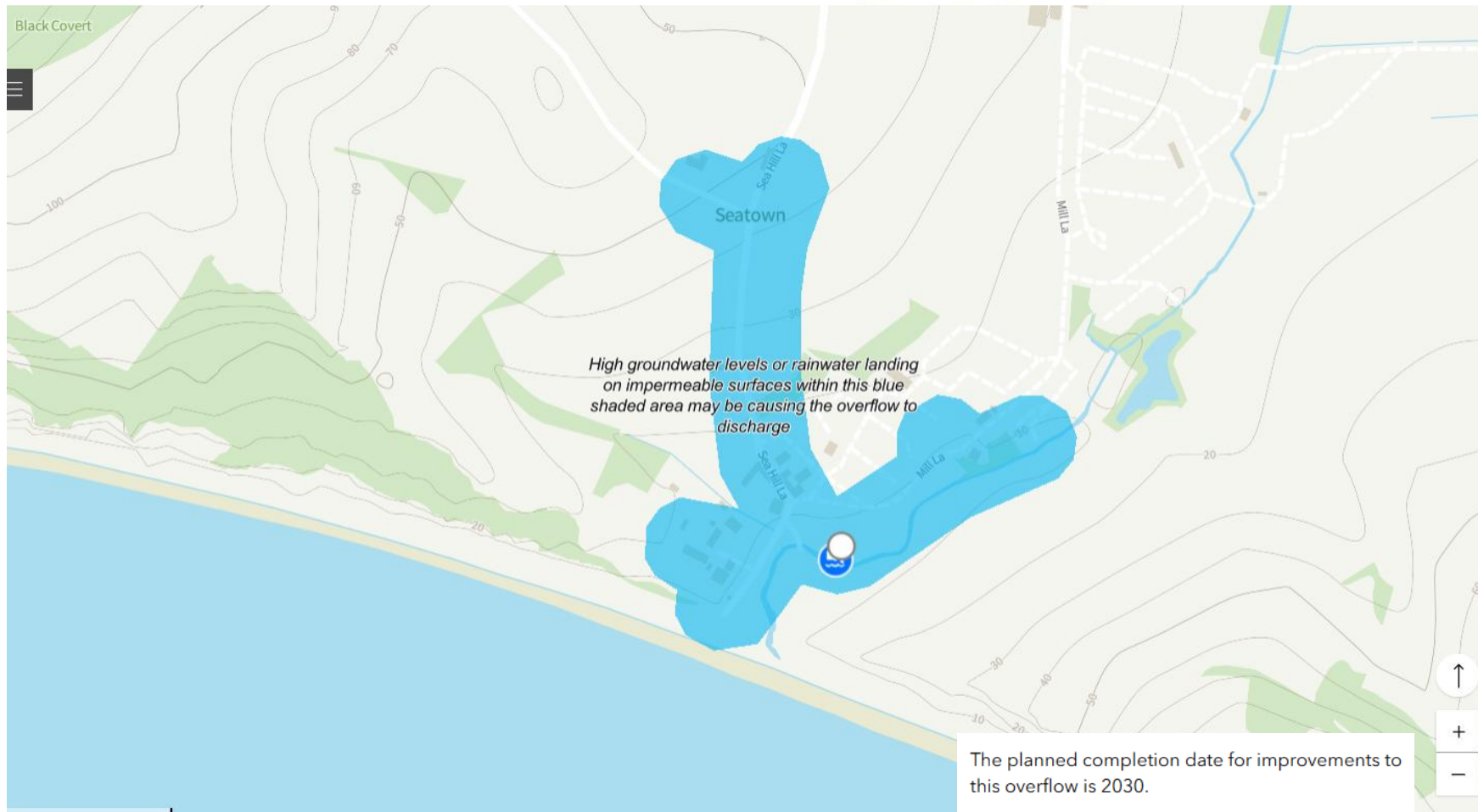
**BOD**  
(mg/L O<sub>2</sub>)  
Action: 30  
Permit: 40

**Total Iron**  
( $\mu$ )  
Action:  
Permit :



# Chideock WRC Overflow – improvement 2030

## Storm Overflow Location Details



CHIDEOCK SEATOWN		
No recent discharges <a href="#">&lt; Return to Regional Overview</a>		
Discharges	Site Summary	Rainfall
Impact	Investment Plans	Any Questions?
<b>Type of Overflow</b>		
Storm overflow at pumping station		
<b>Level of Treatment Provided</b>		
Diluted (sewage diluted by rainwater or groundwater)		
<b>Permit Reference (see Public Registers Online)</b>		
043190		
<b>Discharge History</b> (number of discharges per year, which approximately equates to how many days saw discharging activity, regardless of duration)		
Discharges in 2023: 15		
Discharges in 2024: 18		
Discharges in 2025 (to end of October): 4		
<b>What's getting in the sewer causing it to discharge?</b>		
This overflow discharges primarily in response to rainwater entering the sewer		

# Phosphate / Orthophosphate

**Wessex Water**  
YTL GROUP



# Phosphate / Orthophosphate

Can you tell us how many STWs in the CROWD area remove phosphate? And how many are due to be upgraded to do so in AMP8?

Have you any thoughts on the fact that WW *adds* an estimated 300 tonnes of phosphoric acid per year for plumbosolvency control and then *removes* an estimated 300-500 tonnes of phosphorus – at great expense - across its estate?

# 8 West Dorset WRCs - Existing P Permits

Site	PE	2024 Sample mg/l	2025 P - Permit mg/l	2030 P - Permit mg/l
PUNCKNOWLE	1361		4	4
BUCKLAND NEWTON	458	1.5	4	1
THORNFORD	5035	0.7	1.5	0.25
MAIDEN NEWTON	1730	0.6	1	0.25
CERNE ABBAS	1011	0.6	1	0.5
ABBOTSBURY	1167	0.5	0.81	0.5
DORCHESTER	36801	0.8	0.7	0.25
SHERBORNE	14742	0.2	0.5	0.25

# 5 West Dorset WRCS - New P Permits

WRC	PE	2025 P - Permit mg/l	2030 P - Permit mg/l
SOUTH PERROTT	861	-	1
TRENT	693	-	1
SYDLING ST NICHOLAS	424	-	1
TOLLER PORCORUM	282	-	1
BISHOPS CAUNDLE	425	-	0.8

# 22 West Dorset WRCS - No P Permits

Site	PE	2025 P - Permit mg/l	2030 P - Permit mg/l
BRIDPORT	27325	-	-
CHARMOUTH	2421	-	-
BROADMAYNE	1614	-	-
PIDDLEHINTON	1128	-	-
CHIDEOCK	1076	-	-
LONGBURTON	519	-	-
HALSTOCK	345	-	-
CORSCOMBE	331	-	-
EVERSHOT	263	-	-
HOLWELL	257	-	-
ALWESTON	192	-	-
LANGTON HERRING	186	-	-
POWERSTOCK	181	-	-
STOKE ABBOTT	138	-	-
GODMANSTONE STW	131	-	-
WEST MILTON	128	-	-
SANDFORD ORCAS	115	-	-
GLANVILLES WOOTTON	113	-	-
POYNTINGTON	103	-	-
STINSFORD	43	-	-
HIGHER ANSTY	16	-	-
MELPLASH	10	-	-

Dose orthophosphates for public health

Remove phosphates for environmental health

# Plumbosolvency – 4Ws.

## What?

Plumbosolvency - the ability of water to dissolve lead, which can lead to lead contamination from pipes, solder, and fittings in drinking water.

## Why?

Lead is a neurotoxin, especially for children, and is more likely to occur in soft, acidic water.

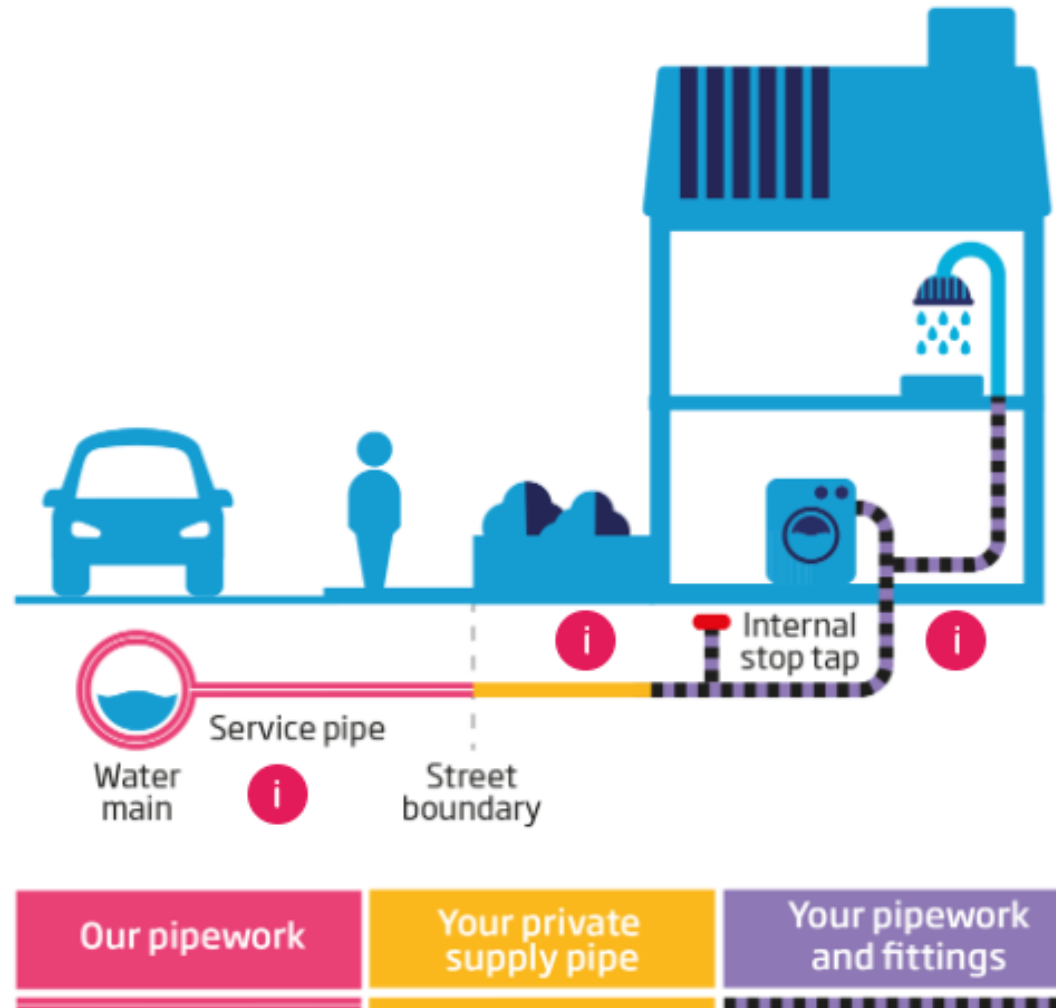
## Where?

Service pipes & customer's internal pipes. (Not in mains or water treatment)

## How?

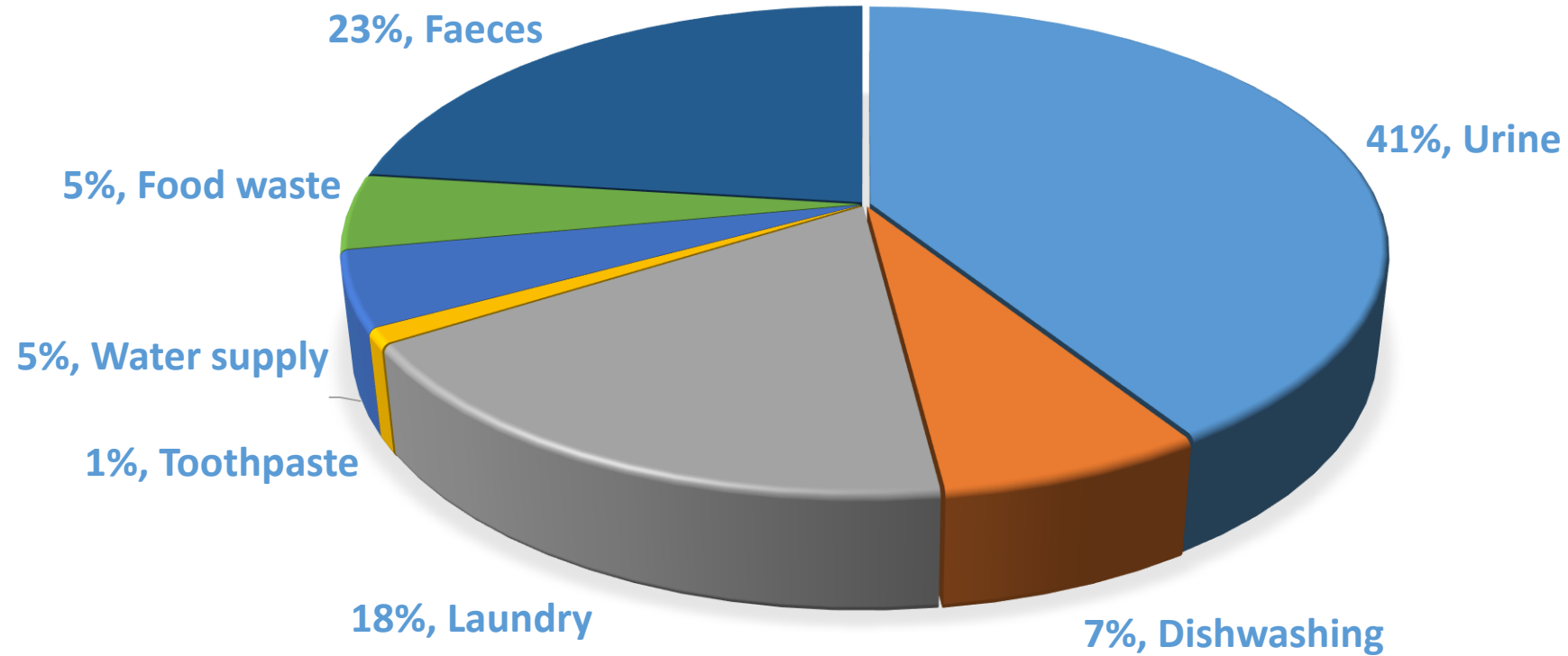
- Add orthophosphate to create a protective layer in pipes. Protect & maintain
- Replacing 6,000 lead pipes and providing grants to help our customers to remove lead in their pipes.
- Long term strategy of replacing lead pipes altogether.

# Whose pipes – whose responsibility?



# Indicative P Sources (2009 Report)

2009 UKWIR REPORT  
P SOURCES - SEWAGE INFLUENT



# Investment 2025 - 2030



## Striking the balance

Our business plan for 2025 - 2030

Protecting and improving rivers and coastal water quality

~£1.4 billion

Storm overflow improvements  
£515m ~£8.5m/month  
143 improvements  
36 NBS

Nutrient removal  
£820 million  
122 WRCs

Smart Rivers  
£63 million  
470 locations

£4.2 billion

# Key investment areas

## Nutrients - £820million



## Water resilience - £130 million

- Leakage reduction
- Smart metering / water efficiency
- New supply options



## Storm overflows - £515 million



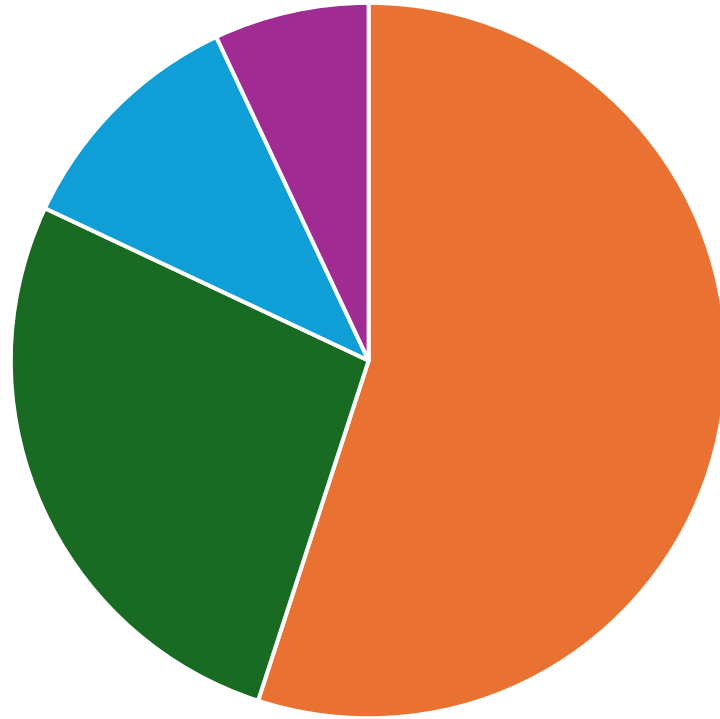
**£53m to improve drinking water quality**  
(including PFAS reduction measures)



## Capital maintenance - £800 million

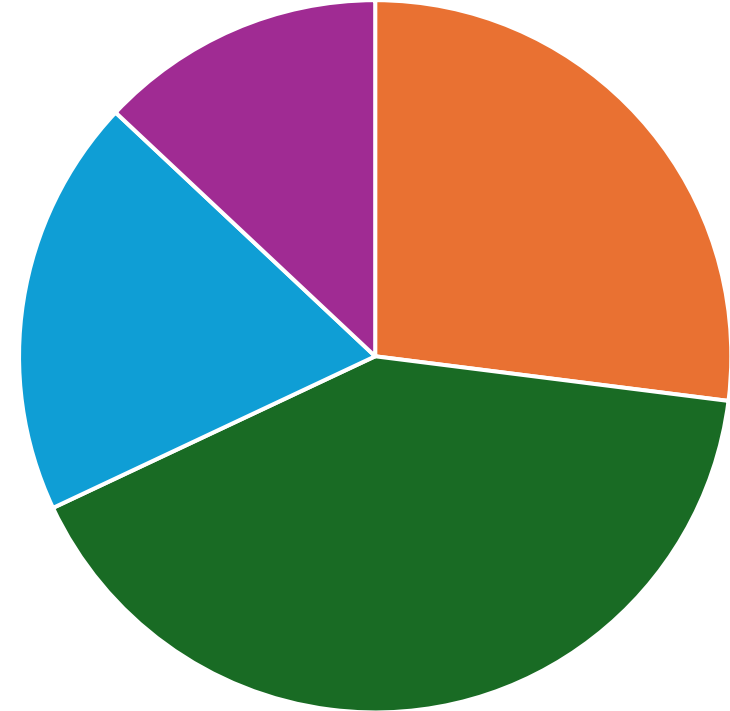
# Phosphorus Contribution to Rivers Environment Agency - England

2020



■ Sewage ■ Agriculture ■ Urban pollution ■ Other

2030



■ Sewage ■ Agriculture ■ Urban pollution ■ Other

Significant reduction in treated wastewater phosphorus loadings to meet statutory Environment Act targets. 55% reduction by 2030. 80% by 2038. 2020 baselines